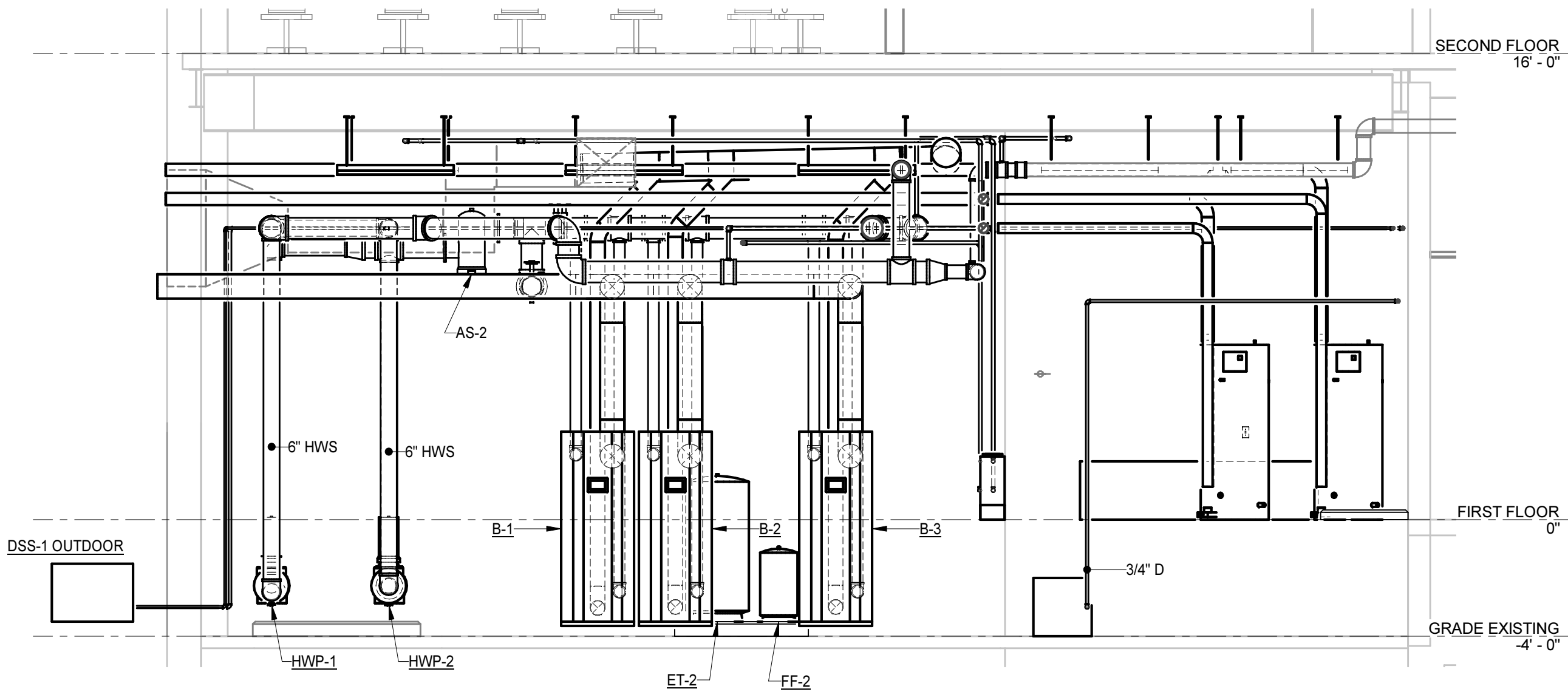
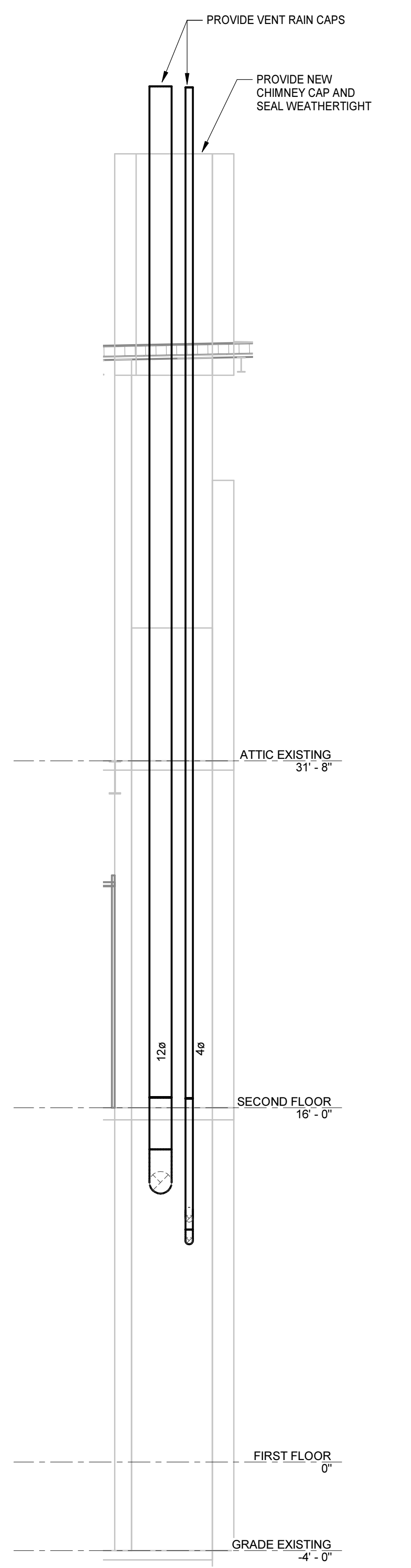


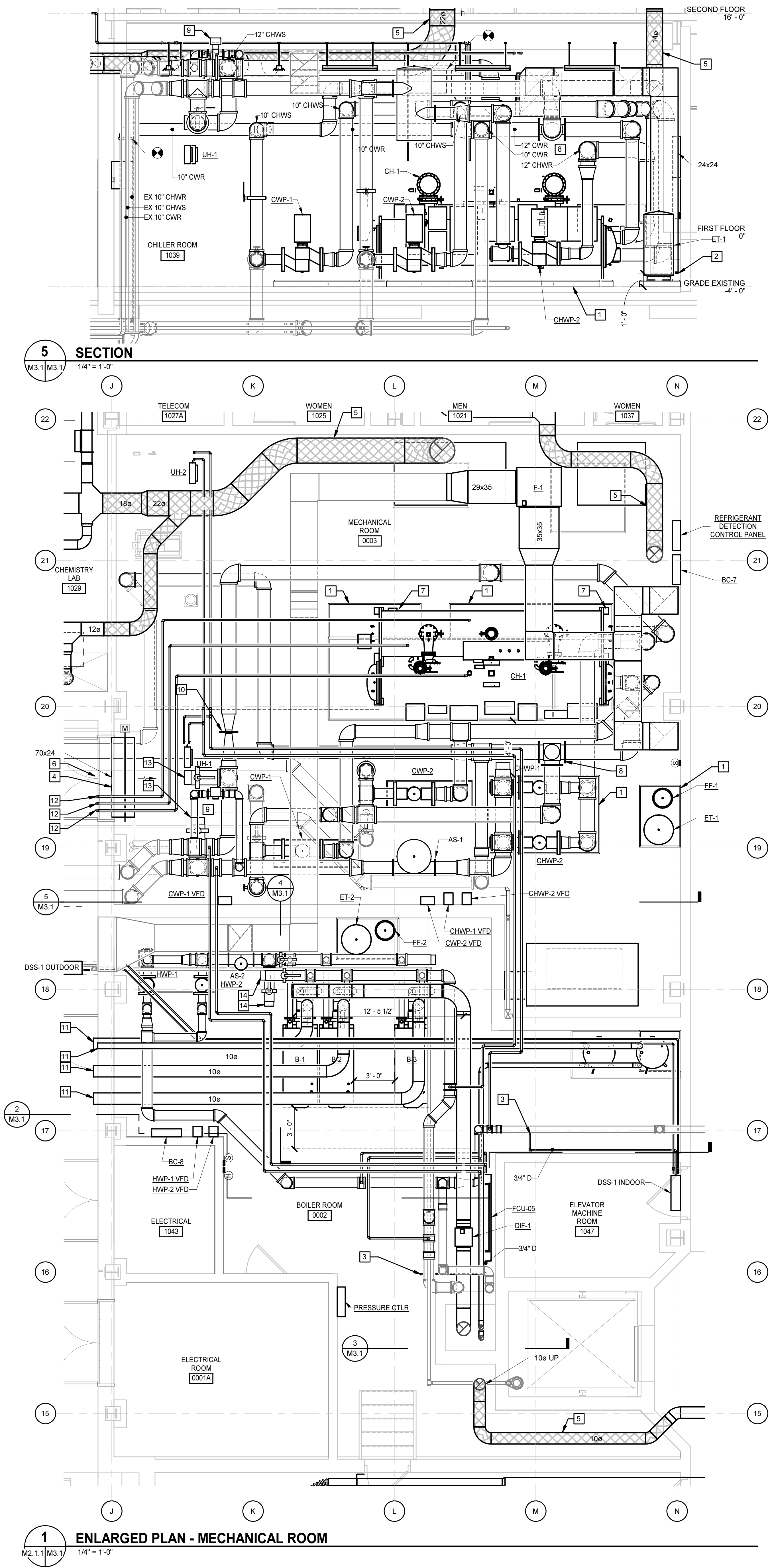
4 SECTION
M3.1 M3.1 1/4" = 1'-0"



2 SECTION
M3.1 M3.1 1/4" = 1'-0"

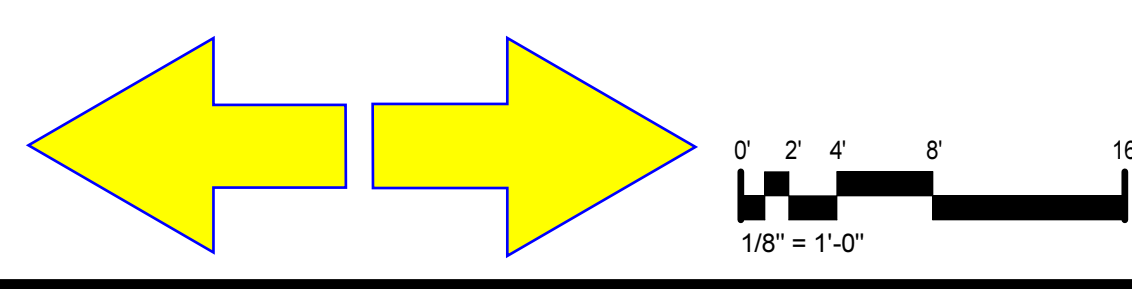


3 SECTION
M3.1 M3.1 1/4" = 1'-0"



1 ENLARGED PLAN - MECHANICAL ROOM
M2.1 M3.1 1/4" = 1'-0"

KEYNOTES	
APPLIES TO THIS DRAWING	
1	6" THICK CONCRETE HOUSEKEEPING PAD. REFER TO STRUCTURAL DRAWINGS FOR DETAILS.
2	OPEN END DUCT. COVER WITH 1/2"x1/2" WELDED WIRE MESH.
3	DISCHARGE CONDENSATE DRAIN TO FLOOR DRAIN.
4	CONNECT DUCT TO LOUVER. REFER TO ARCHITECTURAL DRAWINGS FOR EXACT SIZE AND LOCATION.
5	DUCT SHALL BE WRAPPED IN 2-HOUR RATED FIRE WRAP THAT IS LISTED FOR CHEMICAL FUME EXHAUST DUCT PROTECTION. REFER TO SECTION 230713. DUCT SHALL BE ENCLOSED FROM THE POINT IT CROSSES THE FIRE BARRIER TO THE POINT IT ENTERS THE RATED FLOOR INTO THE RATED GYPSUM WALL SHAFT. INSTALL IN ACCORDANCE WITH THE INSTALLATION INSTRUCTIONS AND THE LISTING OF THE WRAP MANUFACTURER.
6	PROVIDE AUDIBLE AND VISIBLE ALARM AT EACH ENTRY DOOR. PROVIDE WARNING SIGNS INSIDE AND OUTSIDE OF EACH ENTRY DOOR TO CHILLER PLANT THAT READ "AUDIBLE AND VISIBLE ALARM SOUNDING INDICATES REFRIGERANT DETECTION - ENTRY REQUIRES SCBA". REFER TO SECTION 232350 FOR ADDITIONAL DETAILS.
7	LOCATION OF SAMPLING PORT FOR REFRIGERANT MONITOR. COORDINATE LOCATION WITH CHILLER.
8	COOLING TOWER BYPASS VALVE.
9	CHILLED WATER SYSTEM BYPASS VALVE.
10	INSTALL CHILLED WATER FLOW/BU METER IN ACCORDANCE WITH MANUFACTURER'S INSTRUCTIONS.
11	PROVIDE WALL COMBUSTION AIR INTAKE TERMINATION IN ACCORDANCE WITH BOILER/WATER HEATER MANUFACTURER'S INSTRUCTIONS.
12	TERMINATE REFRIGERANT RELIEF VALVE PIPING 20' ABOVE GRADE.
13	12" TEMPORARY CHILLER CONNECTIONS
14	8" TEMPORARY BOILER CONNECTIONS



MOSELEYARCHITECTS

811 N. WEST STREET, SUITE 205 RALEIGH, NORTH CAROLINA 27603
PHONE (919) 845-0691
MOSELEYARCHITECTS.COM

PROGRESS
PRINT, NOT FOR
CONSTRUCTION

Dobo Hall Renovation - Package A

SCO PROJECT NO. 18-19798-01A
UNC Wilmington
4978 CAHILL DR, WILMINGTON, NC 28403

PROJECT NO.	DATE
580999	MARCH 27, 2019
REVISIONS	
DATE	DESCRIPTION

ENLARGED PLANS

M3.1